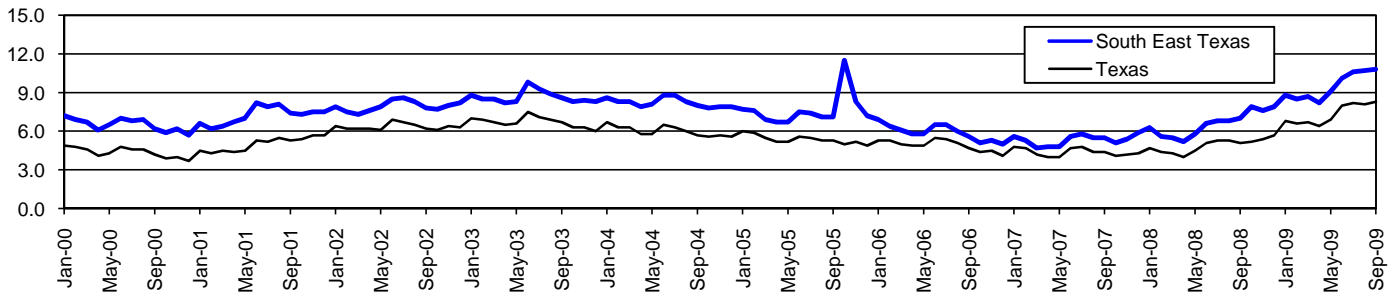


South East Texas Workforce Development Area*

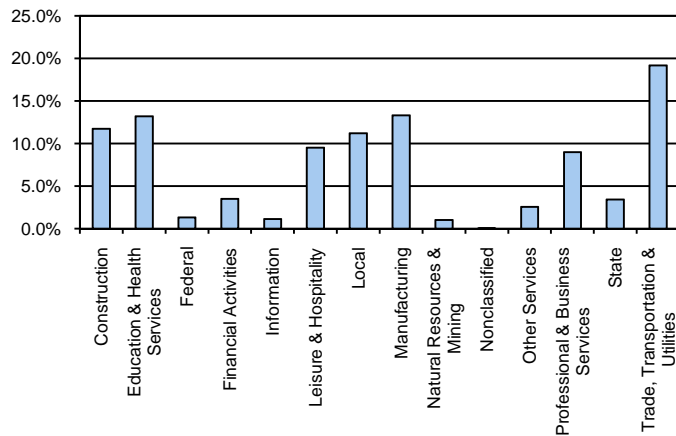
September 2009

South East Texas WDA					Texas				
	CLF	Employed	Unemployed	Rate		CLF	Employed	Unemployed	Rate
Sep-09	182,922	163,253	19,669	10.8	Sep-09	12,069,432	11,073,437	995,995	8.3
Aug-09	183,748	164,120	19,628	10.7	Aug-09	12,061,986	11,079,518	982,468	8.1
Sep-08	180,876	168,160	12,716	7.0	Sep-08	11,773,054	11,167,709	605,345	5.1

Historical Unemployment Rates



South East Texas WDA Industry Composition 1st Quarter 2009



Total WDA Claims

	Sep-09	Aug-09	Sep-08	OTY
Initial	2,852	2,406	14,503	-11,651
Continued	14,526	16,144	14,841	-315
Continued Claims for the Week of the 12th				
Continued	4,601	5,123	3,008	1,593

Texas Unemployment Insurance Claims Filed

	Sep-09	Aug-09	Sep-08	OTY
Initial	98,725	98,444	128,456	-29,731
Continued	1,188,040	1,404,113	559,998	628,042
Continued Claims for the Week of the 12th				
Continued	276,553	295,488	116,371	160,182

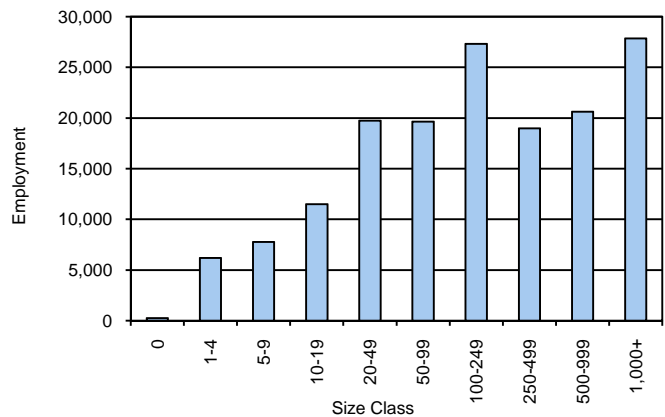
South East Texas WDA Average Weekly Wage

	South East Tx	WDA Qtr. Chg.	Texas
1st Quarter 2009	\$835.11	-\$73.24	\$884.74
4th Quarter 2008	\$908.35	WDA OTY Chg.	\$932.81
1st Quarter 2008	\$832.79	\$2.32	\$903.44

NAICS Covered Employment Quarterly Data 1st Quarter 2009

SUPER SECTOR	Employment	Change	
		Quarter	Year
Construction	18,738	-2,255	1,912
Education & Health Services	21,087	301	201
Federal	2,088	-18	-112
Financial Activities	5,585	-64	-129
Information	1,803	-115	-209
Leisure & Hospitality	15,219	760	976
Local	17,883	333	242
Manufacturing	21,285	-544	-1,490
Natural Resources & Mining	1,622	-97	-169
Nonclassified	42	31	2
Other Services	4,070	-44	-172
Professional & Business Services	14,356	-865	-830
State	5,451	41	166
Trade, Transportation & Utilities	30,614	-739	-254
TOTAL	159,843	-3,275	134

Size Class Employment Composition 1st Quarter 2009



*Counties in WDA: Hardin, Jefferson, & Orange